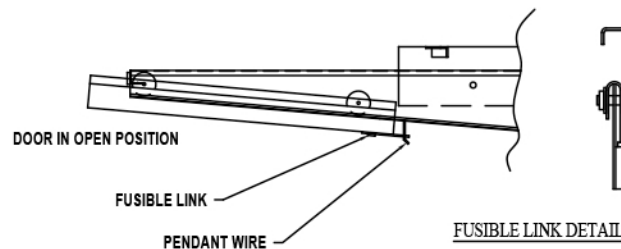
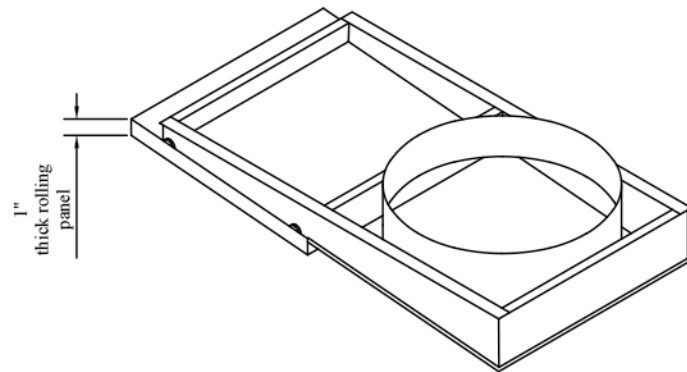
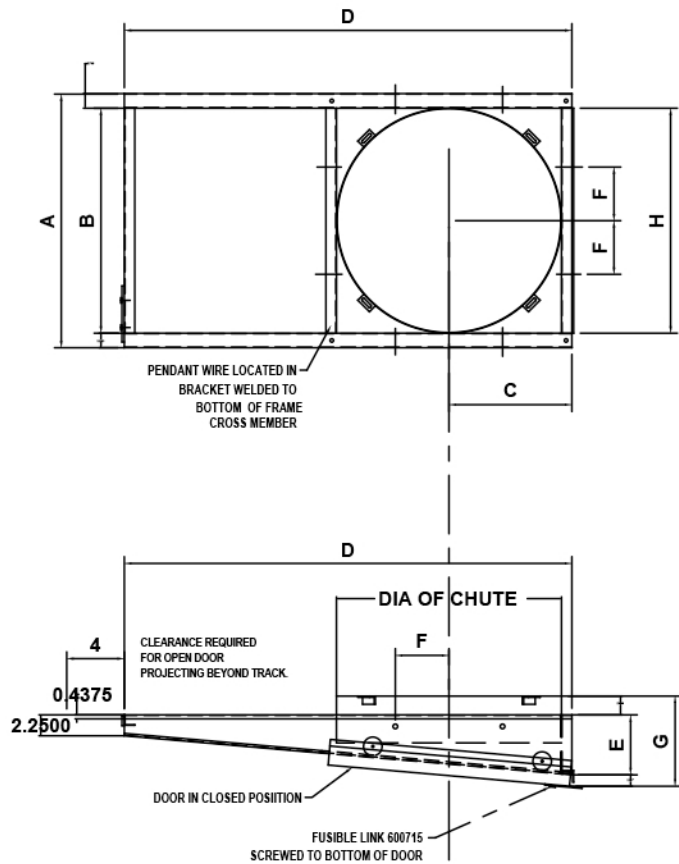


Inclined, Rolling Discharge Door with door panel constructed as a 90 minute B-Label panel with a max temp. rise of 250 deg F. over 30 minutes. DOOR DOES NOT CARRY A B-LABEL. No trash chute discharge doors or shutters by any manufacturer are tested for this particular application because no manufacturer has created a door or shutter that works as part of a fire rated assembly.



"A" DISCHARGE DOOR

CHUTE DIA	A	B	C	D	E	F	G	H
36	39 1/4"	36 1/8"	19 1/16"	72"	9"	7"	12 1/4"	36 7/16"
30	33 1/4"	30 1/8"	16 1/8"	60"	8"	6 1/2"	11 1/4"	30 7/16"
28	31 1/4"	28 1/8"	15 1/8"	56"	7 5/8"	6 1/4"	10 1/2"	28 7/16"
24	27 1/4"	24 1/8"	13 1/8"	48"	6 7/8"	5 3/4"	10 1/8"	24 7/16"
22	25 1/4"	22 1/8"	12 1/8"	44"	6 5/8"	5 1/2"	9 7/8"	22 7/16"
20	23 1/4"	20 1/8"	11 1/8"	40"	6 1/4"	5 3/8"	9 1/2"	20 7/16"
18	21 1/4"	18 1/8"	10 1/8"	36"	5 7/8"	5 1/4"	9 1/8"	18 7/16"
15	18 1/4"	15 1/8"	8 5/8"	30"	5 3/8"	4 5/8"	8 5/8"	15 7/16"

REVISIONS			"A" DISCHARGE DOOR	1 of 1
#	DATE	INIT		
	8-10-11	MC		
1				
2				
3				
4				
5				
6				
7				

DWG: A DOOR CUT SHEET .DWG BY:MC